



TIG® XP 5, is:

- A tool that is easy to use

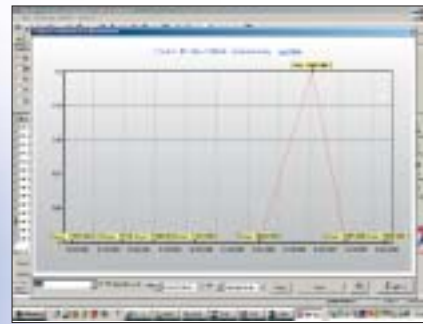
Very simple to use, TIG® XP 5 employs the standard Windows interface while offering a signalling system that can be immediately understood by any user, even if he or she is lacking in particular computer competence. Intended for an international customer base, TIG® XP 5 can easily be adapted to the user's language. 7 languages are already operational (dutch, english, french, german, italian, spanish, polish) with more to come.

- Simplified migration

TIG® XP 5 has been designed with TOTAL LUBRIFIANTS customers in view. Updating of TIG® W 4 is in fact automatic using the installation CD-Rom. For those customers using SATIE®, migration is perfectly possible with no data loss.

- A transfer of expertise

To help users achieve perfect mastery of TIG® XP 5, specific product-associated training is provided together with technical assistance. These two services, linked as they are to the purchase of a user's licence, are provided by lubrication specialists. Users of LUBIANA® industrial oil analysis of DIAGOPARC® or DIAGOGAZ® services can furthermore automatically include the results of their analysis in their maintenance database.

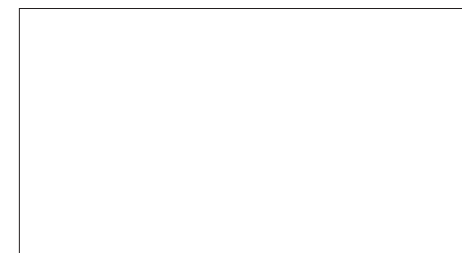


REQUIRED COMPUTER CONFIGURATION

- Windows 95, 98, NT, 2000 and XP operating system
- Single-station environment or network
- Pentium 166 with minimum 64 Mo of read-write memory
- Hard disk with minimum 500 Mo free space
- CD-Rom reader
- Colour screen (1024 x 768 minimum resolution)
- Printer controlled by Windows

For further information, visit our Web site:
www.lubricants.total.com

TOTAL LUBRIFIANTS
16, rue de la République
F 92922 Paris La Défense Cedex
Tel. : 33 1 41 35 40 00



TIG® XP 5

Computer Processing of Lubrication: management software for lubrication and preventive maintenance



WD Communication - 07/2003 - Photos credits TOTAL LUBRIFIANTS - Printed in France



TOTAL



TIG[®] XP 5, the new reference for lubrication management

The quality of lubrication, particularly in industry, is based on the quality of the products, the use to which they are put and strict monitoring of lubrication itself.

Lubrication is a complex operation, which requires one to respect multiple parameters ranging from the specific technical characteristics of each machine to the professional competence of the operators, without forgetting the lubrication intervals.

TIG[®] XP 5 was designed with a view to assisting industry in the development of its maintenance operations.

USER SITES	APPLICATIONS
<ul style="list-style-type: none"> • Large sites: refineries, cement works, paper mills, etc. 	<ul style="list-style-type: none"> • Lubrication and maintenance management • Direct use by maintenance department
<ul style="list-style-type: none"> • Medium-sized sites 	<ul style="list-style-type: none"> • Lubrication and maintenance management • Utilisation of all the functionalities
<ul style="list-style-type: none"> • Maintenance companies 	<ul style="list-style-type: none"> • Lubrication and maintenance management • Assessment of action times • Assessment of lubrication costs

RESPONSIBILITIES
<ul style="list-style-type: none"> • Access 1 - Director - design, possible changes to lubrication survey - calculations, validation of operations to be carried out - consultations, printing (lubrication survey, background, actions, analysis, etc.)
<ul style="list-style-type: none"> • Access 2 - Lubricator - calculations, validation of operations to be carried out - consultations, printing (lubrication survey, log, actions, analysis, etc.)
<ul style="list-style-type: none"> • Access 3 - Consultation - consultations, printing (lubrication survey, log, actions, analysis, etc.)

changer les logos sur les écrans

THE FUNCTIONALITIES

Entrust lubrication professionals with development of TIG[®] XP 5 on the basis of the know-how acquired by TOTAL LUBRIFIANTS. TIG[®] XP 5 examines, enhances and enriches the functions of TIG[®] W 4, Satie[®] 2000 and Finassist[®] in particular as regards maintenance management and planning.

STRUCTURE	<ul style="list-style-type: none"> • Plant: 1 to 4 levels of a tree structure that can be tailored to closely match the plant organisation • Machine: 4 tree structure levels
PLANNING TASKS AND MAINTENANCE OPERATIONS	<ul style="list-style-type: none"> • Simulation of calculations: regarding entire lubrication survey, one particular level or one particular machine • Planning (actual or simulated) of work loads <ul style="list-style-type: none"> - average time needed to carry out an operation - weekly data collection - data collection per machine, structure or route • Predicted product consumption <ul style="list-style-type: none"> - actual operations - simulated operations
PRODUCTS MANAGEMENT	<ul style="list-style-type: none"> • Lubricants or maintenance products management: codes, brands, etc. • Management of orders and deliveries • Management of products consumption <ul style="list-style-type: none"> - by tree structure - per machine - based on actual, simulated or historical calculations
ANALYSIS OF COSTS OF LUBRICATION	<ul style="list-style-type: none"> • Assessment of costs of lubricants and maintenance products • Assessment of labour costs • Generation of files to be used with Excel[®] or Access[®] <ul style="list-style-type: none"> - preventive maintenance log - corrective maintenance log (actions) - actual or simulated scheduling (operations to be carried out)
OIL MANAGEMENT ANALYSIS	<ul style="list-style-type: none"> • Initiation of sampling; operations • Management of equipment monitored by analysis • Management of results by machine or sampling intervals, diagnosis colour or by history LUBIANA[®] DIAGOPARC[®] and DIAGOGAZ[®] code • Storage of values, diagnoses and comments • Direct importation of LUBIANA[®], DIAGOPARC[®] and DIAGOGAZ[®] result files • Storage of all the characteristics monitored by LUBIANA[®], DIAGOPARC[®] and DIAGOGAZ[®] • Graphic monitoring of evolution of each characteristic measured • Display of API photo (Analytical Particulate Index) • Printings <ul style="list-style-type: none"> - results sheet complete with colour of diagnosis and log of 7 most recent samplings - file of equipment monitored by analysis - file of samples analysed - list of samples of a machine - reference of equipment to be stuck on LUBIANA[®], DIAGOPARC[®] and DIAGOGAZ[®] stubs

Personalisation, agenda, reference, and other functions are also available.